

FHWA Road Safety Updates

LPESA Fall Conference 2021

Natchitoches Event Center

November 4, 2021

State of Louisiana Updates

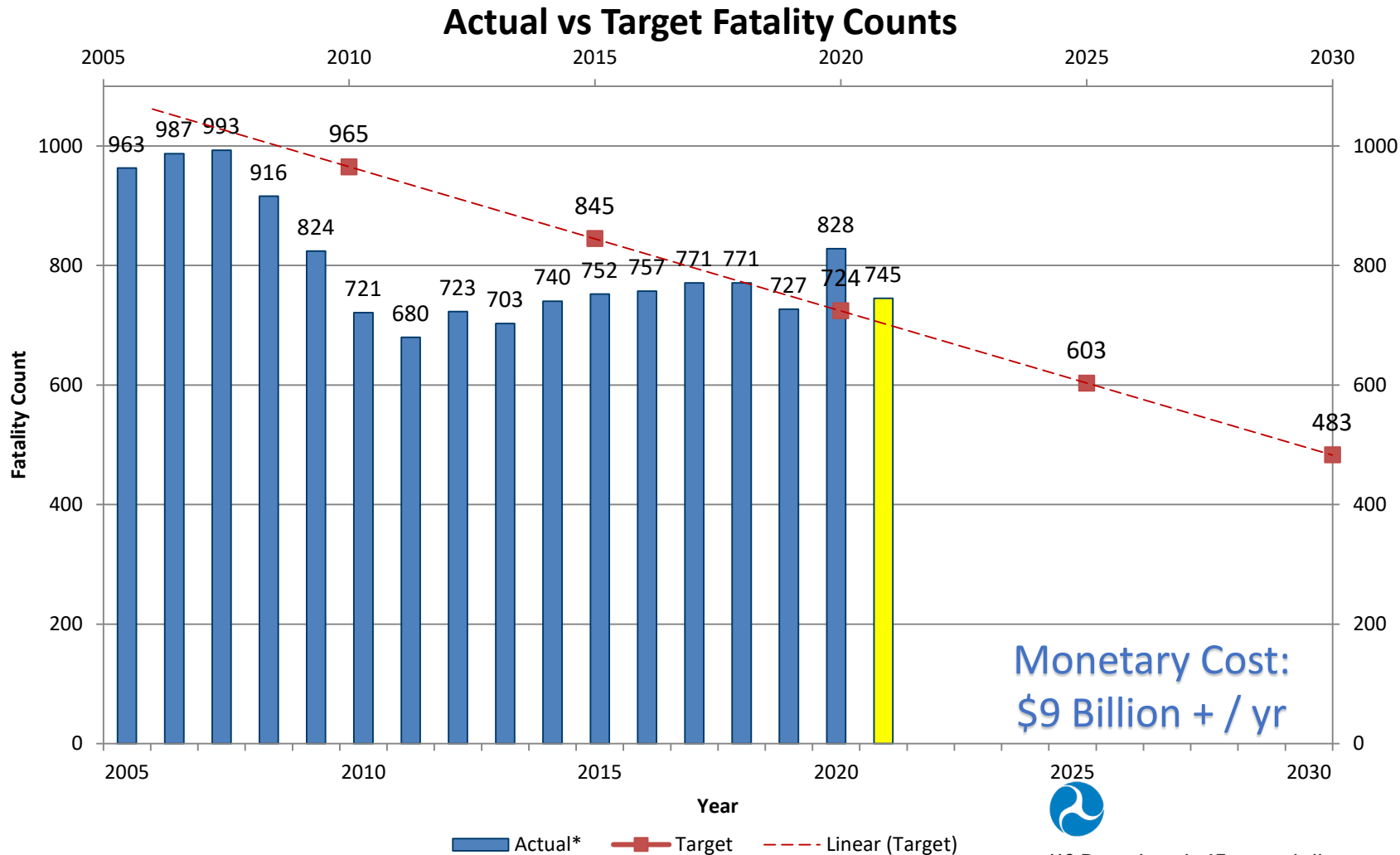
- **2021 Fatalities**
- **Highway Safety Summit 2021**
- **2021 SHSP Update**
- **Regional Safety Coalitions**



U.S. Department of Transportation
Federal Highway Administration



SHSP Goal: Reduce Fatalities 50% by 2030



Monetary Cost:
\$9 Billion + / yr



U.S. Department of Transportation
Federal Highway Administration



2021 Highway Safety Summit

ZERO IN ON SAFETY
2021 Louisiana Highway Safety Summit

ZERO FATALITIES

SAVE THE DATES
November 16-18, 2021
(all virtual)

DESTINATION ZERO DEATHS

REGISTRATION IS FREE

<https://lahwysafetysummit2021.us2.pathable.com/>

Presentation topics include Workzones, Safety Data, Rail, Engineering, Impaired Driving, Occupant Protection, Young Drivers

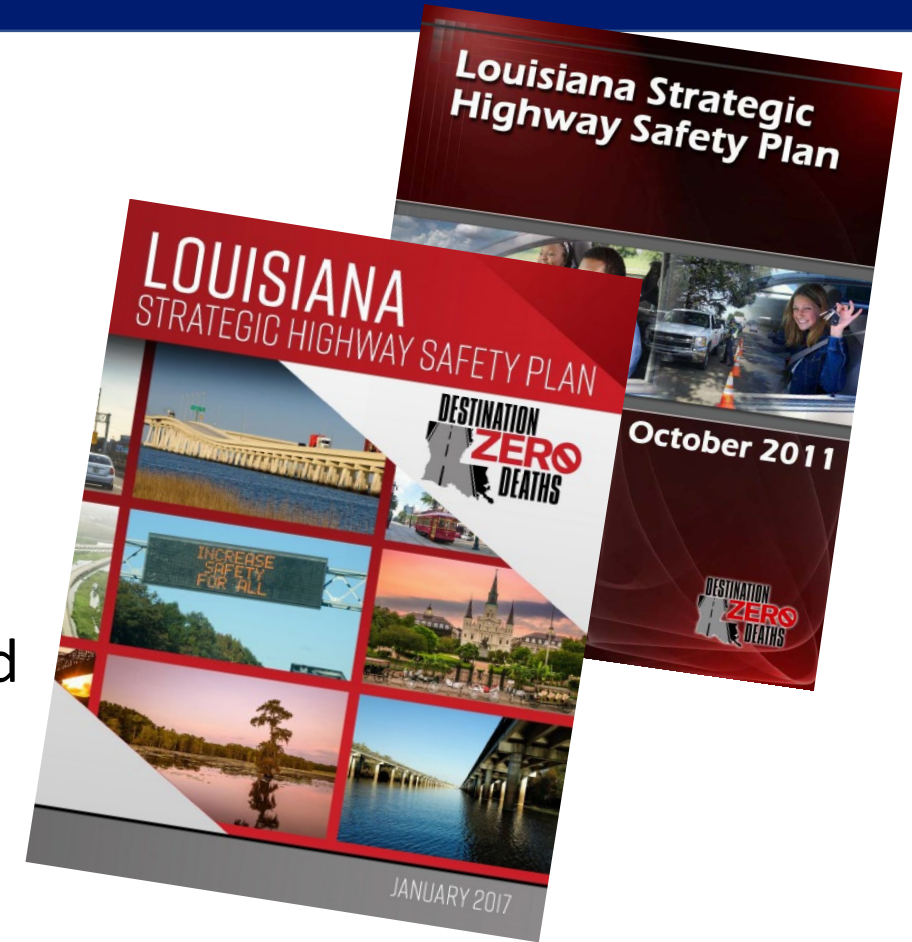


U.S. Department of Transportation
Federal Highway Administration



Strategic Highway Safety Plan 2022 UPDATE

- July 2022 Update (last updated July 2017)
- 2022 Update Process Ongoing
 - Stakeholder input
 - Data analysis
- Current Emphasis Areas
 - Occupant Protection, Impaired Driving, Young Driver, Infrastructure and Operations, Distracted Driving
- **Statewide plan...local implementation**



U.S. Department of Transportation
Federal Highway Administration



Federal Highway Administration
RESOURCE CENTER
Office of Innovation Implementation

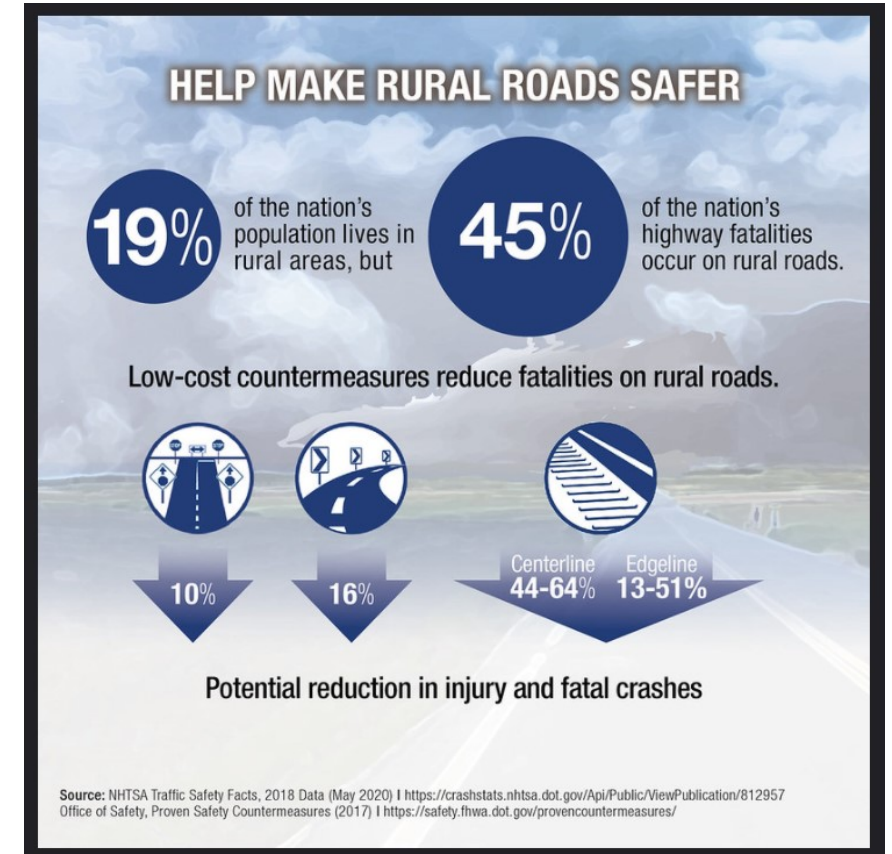
SHSP Regional Safety Coalitions



For more information, visit www.destinationzerodeaths.com

National Updates

- Local Road Safety Plans
- 2021 FHWA Proven Safety Countermeasures
- 2021 Focused Approach to Safety



U.S. Department of Transportation
Federal Highway Administration



Federal Highway Administration
RESOURCE CENTER
Office of Innovation Implementation

LOCAL ROAD SAFETY PLANS:

Your Map to Safer Roadways

No matter what your resources, a Local Road Safety Plan will guide you to data-driven solutions and safer roads.

https://safety.fhwa.dot.gov/provencountermeasures/local_road/

Chevron signs reduce nighttime crashes by 25%.

In 2017, over 50% of fatalities occurred on rural roads, but just 19% of Americans live in rural areas.

More than 75% of all roads are maintained by local agencies.



Local Road Safety Plans – DIY website

The screenshot displays the homepage of the Local Road Safety Plans (LRSP) DIY website. On the left, a vertical graphic shows a winding road with a car, a tree, and a question mark sign. The main header features the title "LOCAL ROAD SAFETY PLANS: Your Map to Safer Roadways" in a white banner. Below this, a horizontal sequence of five green buttons outlines the process: "Step 1 Identify Stakeholders", "Step 2 Use Safety Data", "Step 3 Choose Proven Solutions", "Step 4 Implement Solutions", and "Finish Line". A central text block welcomes users and provides instructions on how to use the site. Below the text is a video player for "LRSP DIY: Introduction" with a play button and "Watch later" and "Share" options. To the right, a section titled "SCROLL DOWN FOR MORE VIDEOS" contains two yellow buttons: "Welcome - FHWA Leadership" and "Local Road Safety Plan". Below these is a thumbnail for a "Welcome" video. At the bottom, a "TOOLS & RESOURCES" section includes a yellow arrow icon and four navigation links: "Guides & Training", "LRSP Examples", "State LRSP Sites", and a horizontal line.

LOCAL ROAD SAFETY PLANS:
Your Map to Safer Roadways

Step 1
Identify Stakeholders

Step 2
Use Safety Data

Step 3
Choose Proven Solutions

Step 4
Implement Solutions

Finish Line

Welcome to the local road safety plan do-it-yourself website! We are so happy you are here. On this site, you'll find everything you need to make a plan that fits your community and gets people home safely. Watch the video below to learn how to use the site and build your plan. If you need help contact us anytime.

LRSP DIY: Introduction
Watch later Share

LOCAL ROAD SAFETY PLANS:
Your Map to Safer Roadways

INTRODUCTION

SCROLL DOWN FOR MORE VIDEOS

Welcome - FHWA Leadership

Local Road Safety Plan

LOCAL ROAD SAFETY PLANS:
Your Map to Safer Roadways

Welcome

Local Road Safety Plan

TOOLS & RESOURCES

Guides & Training LRSP Examples State LRSP Sites

<https://safety.fhwa.dot.gov/LRSPDIY/>

2021 FHWA Proven Safety Countermeasures

SPEED MANAGEMENT



**Speed Safety
Cameras**



Variable Speed Limits



**Appropriate Speed
Limits for All Road Users**

ROADWAY DEPARTURE



Wider Edge Lines



**Enhanced Delineation
for Horizontal Curves**



**Longitudinal Rumble
Strips and Stripes on
Two-Lane Roads**



SafetyEdgeSM



**Roadside Design
Improvements at
Curves**



Median Barriers

CROSSCUTTING



**Pavement Friction
Management**



Lighting



Local Road Safety Plans



Road Safety Audit



2021 FHWA Proven Safety Countermeasures

INTERSECTIONS



Backplates with Retroreflective Borders



Corridor Access Management



Dedicated Left- and Right-Turn Lanes at Intersections



Reduced Left-Turn Conflict Intersections



Roundabouts



Systemic Application of Multiple Low-Cost Countermeasures at Stop-Controlled Intersections



Yellow Change Intervals



PEDESTRIANS/BICYCLES



Crosswalk Visibility Enhancements



Bicycle Lanes



Rectangular Rapid Flashing Beacons (RRFB)



Leading Pedestrian Interval



Medians and Pedestrian Refuge Islands in Urban and Suburban Areas



Pedestrian Hybrid Beacons



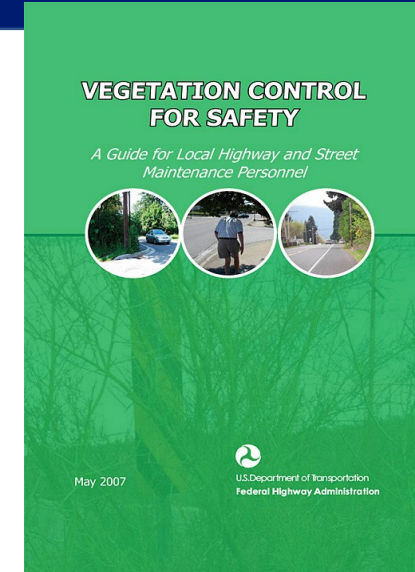
Road Diets (Roadway Reconfiguration)



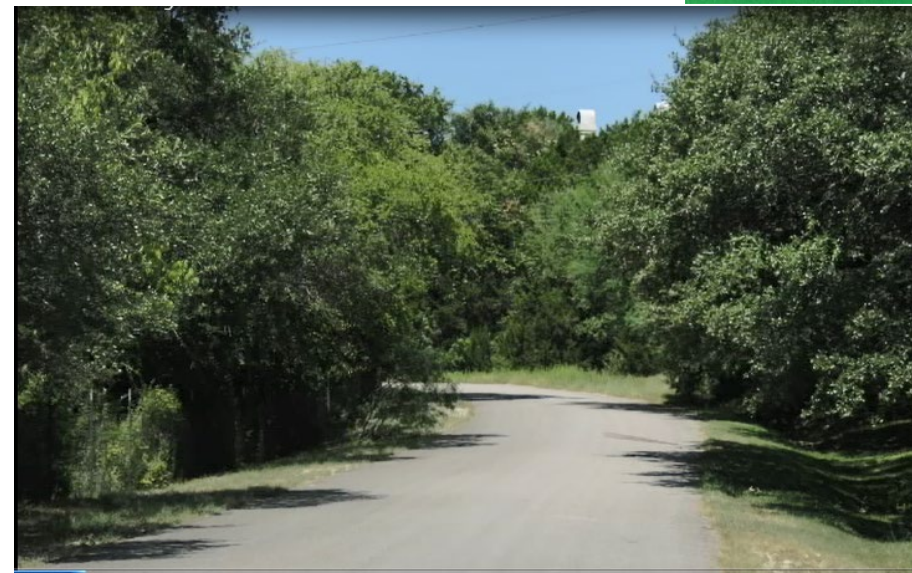
Walkways

VERY Low Cost Countermeasures

- Clear the vegetation
 - Signs, signals, intersections, and driveways
- Observe and adjust signal timing
 - Particularly off-peak



Source: FHWA Office of Safety



FHWA Focused Approach to Safety (FAS)



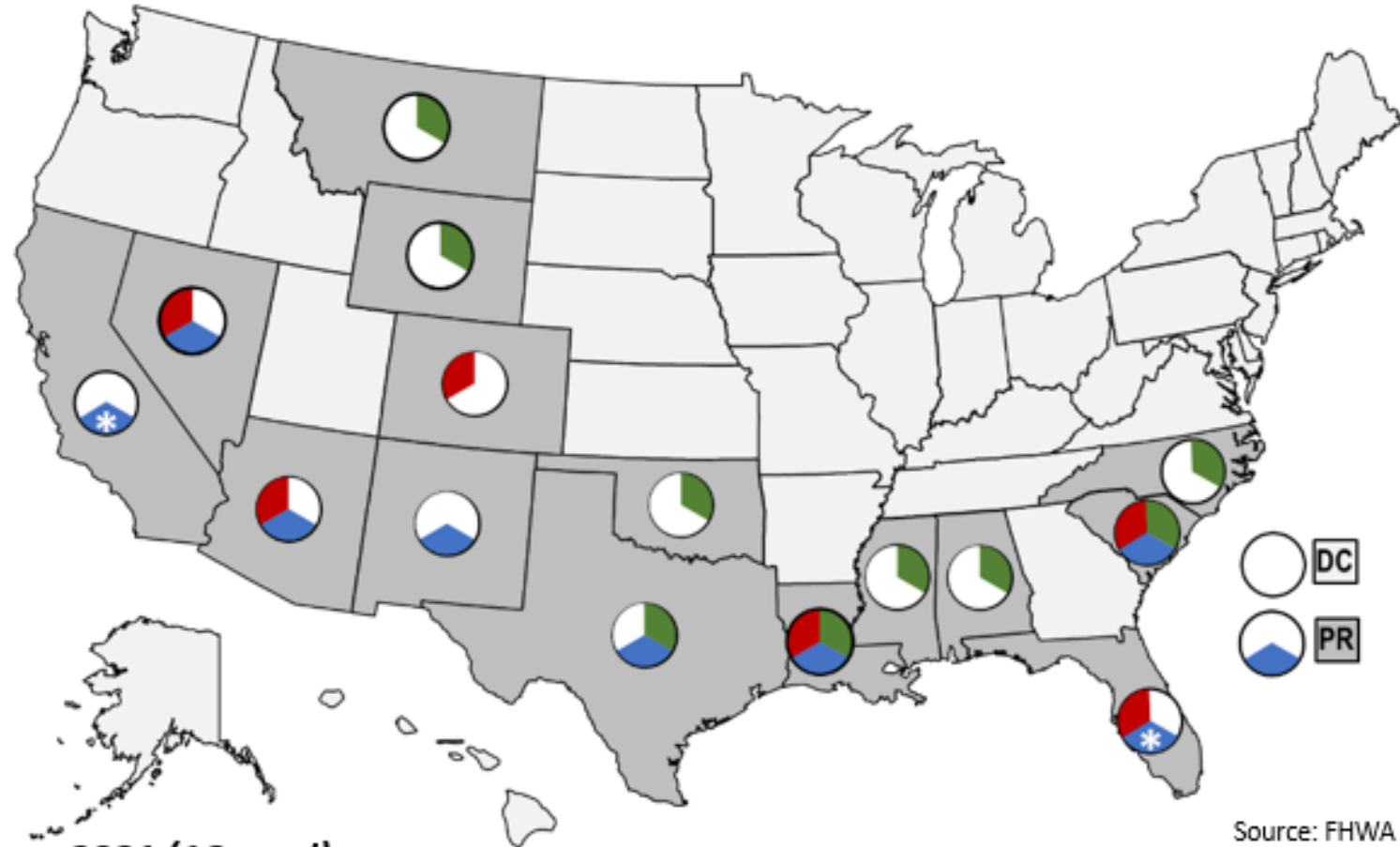
- Roll out – October 20, 2021
- <https://safety.fhwa.dot.gov/fas/>
- Utilize 6 years of NHTSA FARS data, SHSP Database, Incorporate Equity Considerations
- Continue with existing focus areas:
Roadway Departure, Intersections, Pedestrians and Bicycles
 - Add **Speed Management** as an emphasis area across all Focus Areas
 - Add **Two-Lane Rural Roads** emphasis area for Roadway Departure focus area
 - Instead of Cities (current FAS), identify **Regions/MPOs** for Intersections, Pedestrians and Bicycle Focus Areas
- Priority Training & Technical Assistance

FHWA Focused Approach to Safety (FAS)

- Roll out – October 20, 2021
- <https://safety.fhwa.dot.gov/fas/>



2021 Focus States






2021 (16 total):

Alabama, Arizona, California, **Colorado**, Florida, Louisiana, Mississippi, **Montana**, Nevada, New Mexico, North Carolina, **Oklahoma**, Puerto Rico, South Carolina, Texas, **Wyoming**

2021 Map Notes:

1. **Bold** indicates States added with 2021 Update

-  Intersection
-  Roadway Departure
-  Pedestrian-Bicycle

Help Get People Home Safely

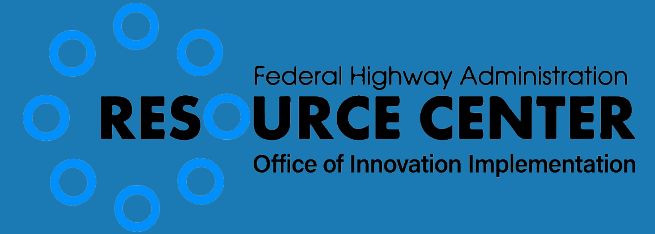
- Celebrate your Safety Milestones
- Use a Data Driven Risk-Based Approach
- Foster Innovation – If it is new to you, it is innovative!
- Be an Amazing Partner & Look for New Partnerships
- Do not get too Comfortable



“Do what you can. With what you have. Where you are.” - Theodore Roosevelt



U.S. Department of Transportation
Federal Highway Administration



Thank You!

Betsey Tramonte
Highway Safety Specialist
FHWA- Louisiana Division
Betsey.tramonte@dot.gov